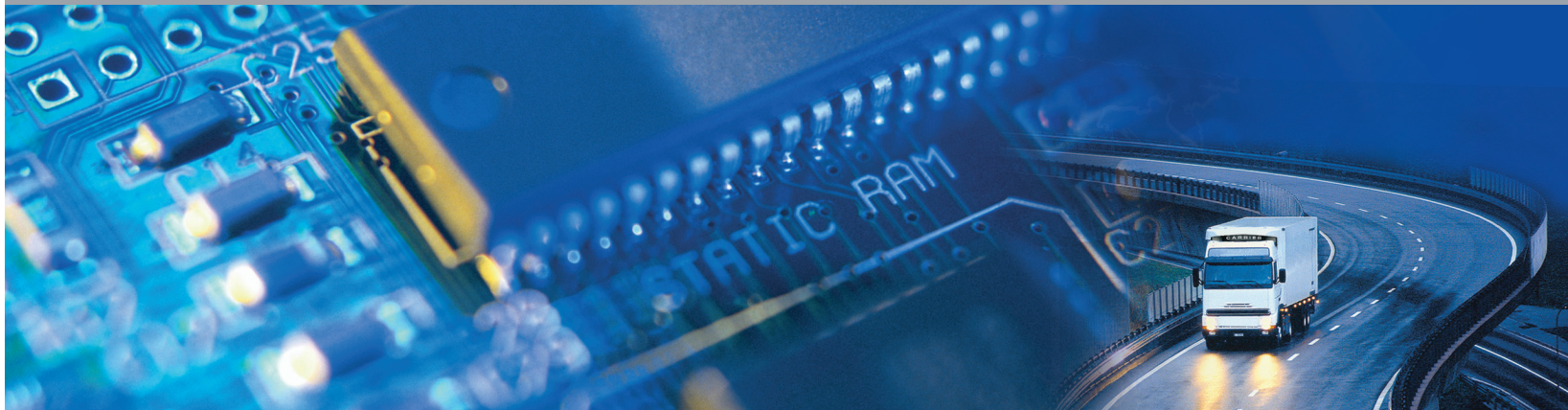




**DATA COLD**



*Bring visibility and control to your Cold Chain with the DataCOLD range, temperature recorders for refrigerated transport.*

With today's increasing emphasis on health and safety, perishable food temperature is at the core of the refrigerated transport and associated regulation. The DataCOLD range encompasses 2 temperature recorders. While the DataCOLD 250 acts as a basic data acquisition system with its temperature sensors, the DataCOLD 500 goes beyond the norm and provides more inputs records and unique communication features.

**European regulations**

The DataCOLD range is compliant with the European regulation for transport of frozen food (EN12830). Sensors have been calibrated from the factory (EN13485) and customers should check maximum every two years that the system is still correctly calibrated (EN13486).

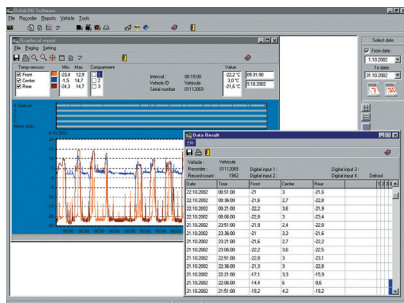
The DataCOLD range is also tested and approved for the electromagnetic compatibility Directive 72/245/EEC as last amended by Directive 2006/28/EC.

**Accessories & options**

- Extra temperature sensors
- Humidity sensors (DataCOLD 500 only)
- Communication cable to computer :
  - Infra red
  - Serial (DataCOLD 500 only)

**PC tool**

As a real data acquisition system, DataCOLD comes with DataLOG PC tool which helps you centralize and analyze the data recorded by your Carrier temperature recorders.



Graphics and numerical reports are automatically generated with the software package.

**DATA COLD 250**

► **Independent**

DataCOLD 250 is the independent way of controlling your load temperature with its external sensors and Carrier designed alarm logic.

The DataCOLD250 meets the latest regulation norms but still benefits from advanced features such as a thermal printer that provides delivery tickets.



■ **Sensors**

- 2 sensors (temperature)
- 2 digital inputs (to record door openings)

■ **Memory size and settings**

- 256 KBYTES (1 year record with 2 sensors @ 15 min interval)
- 1-60 minutes adjustable

■ **Display and keypad**

- LCD screen background-lit, 80x16 dots
- 4 soft keys for ease of use

■ **Thermal printer**

■ **Languages**

English, French, Dutch, German, Italian, Spanish, Portuguese, Swedish, Danish, Hungarian, Slovakian, Romanian, Croatian, Slovenian, Bulgarian, Polish, Turkish

■ **Dimensions**

- 250 T (Trailer): 245x202x110 mm
- 250 R (Radio format): DIN size (188x58x145mm)

**DATA COLD 500**

In addition to the DataCOLD 250 features, DataCOLD 500 provides additional information thanks to a unique connectivity to the Carrier unit and its additional sensors inputs and outputs. The alarm logic designed from Carrier cold chain expertise becomes even more relevant.

► **Connectable**

DataCOLD 500 connects to Carrier reefer units to provide you with the relevant alarms only based on operating status of the machine: defrost delays, set point based alarms, and other reefer operating information.



■ **Sensors**

- 4 sensors (temperature or humidity)
- 4 digital inputs (to record door openings)
- 2 digital outputs (to enable alarms lights)

■ **Memory size and settings**

- 512 KBYTES (1 year record with 4 sensors @ 15 min interval)
- 1-60 minutes adjustable

■ **Display and keypad**

- LCD screen background-lit, 122x32 dots
- 4 soft keys for ease of use

■ **Thermal printer**

■ **Languages**

English, French, Dutch, German, Italian, Spanish, Portuguese, Swedish, Danish, Hungarian, Slovakian, Finnish, Slovenian

■ **Dimensions**

- 500 T (Trailer): 245x202x110 mm
- 500 R (Radio format): DIN size (188x58x145mm)



Specifications are subject to change without notice.

© Carrier Corporation – Carrier Transicold Europe S.C.S. au capital de 16 090 700 euros – R.C.S. Nanterre 410 041 776  
Code APE 4669B – VAT: FR52410041776 – The information contained in this document is not contractually binding, and may not be reproduced without prior approval.  
Printed in France (11-09) 62-61807-20



550 Carrier service stations in Europe, Russia, Middle East and Africa



**Carrier**

A United Technologies Company

Carrier Transicold Europe S.C.S.  
L'Européen Bâtiment D  
4, rue Joseph Monier  
F-92500 Rueil-Malmaison  
Phone: +33 (0)1 41 42 28 00  
Fax: +33 (0)1 41 42 28 28  
www.carrier-transicold-europe.com